

Podkładki stożkowe

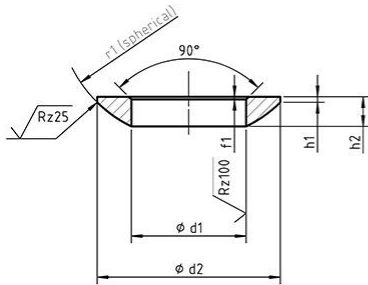


Figure 1: Dimensions of spherical washer (C)
(notation)

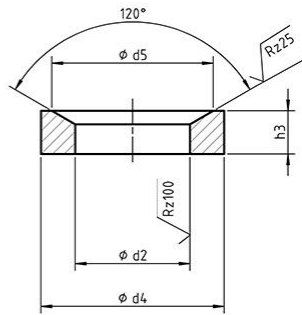


Figure 2: Dimensions of conical seat
(type D: $d_4 = d_5$; type G: $d_4 > d_5$) (notation)

- Normy:
 - DIN 6913C
 - PN
 - ISO
- Material i klasa:
 - stal
- Pokrycie:
 - cynk galwaniczny

wymiar	d_4	d_5	h
7,1	12	11	2,8
8,6	17	14,5	3,5
12	21	18,5	4,2
14,2	24	20	5
19	30	26	6,2
23,2	36	31	7,5
28	44	37	9,5
35	56	49	12
42	68	60	15
49	78	70	18
56	92	82	22